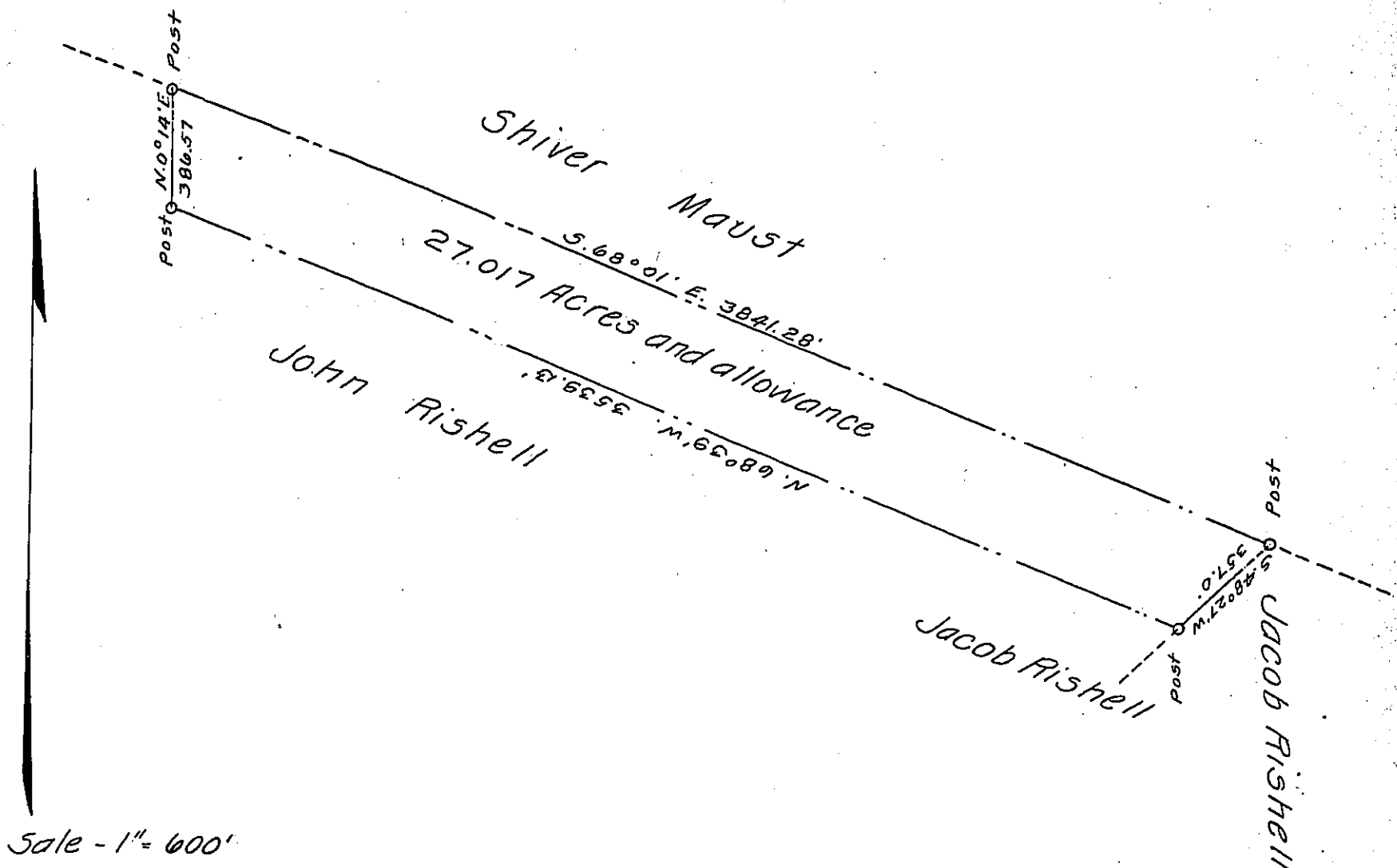


FORM No. 1.



A DRAFT of a tract of land situated in the Township of Wharton and County of Fayette, containing 27.017 acres — perches and allowance of six per cent. for roads etc. Surveyed the 29th day of October 1907 in pursuance of a warrant granted to John M. Rishell dated the tenth day of September 1907.

To Hon. Henry Houck, } J. B. Hogg
 Secretary of Internal Affairs } County Surveyor.

IN TESTIMONY that the above is a copy of the original remaining on file in the Department of Internal Affairs of Pennsylvania, made conformably to an Act of Assembly approved the 16th day of February 1833, I have hereunto set my hand and caused the Seal of said Department to be affixed at Harrisburg, this thirteenth day of December 1907.

Henry Houck
 Secretary of Internal Affairs.